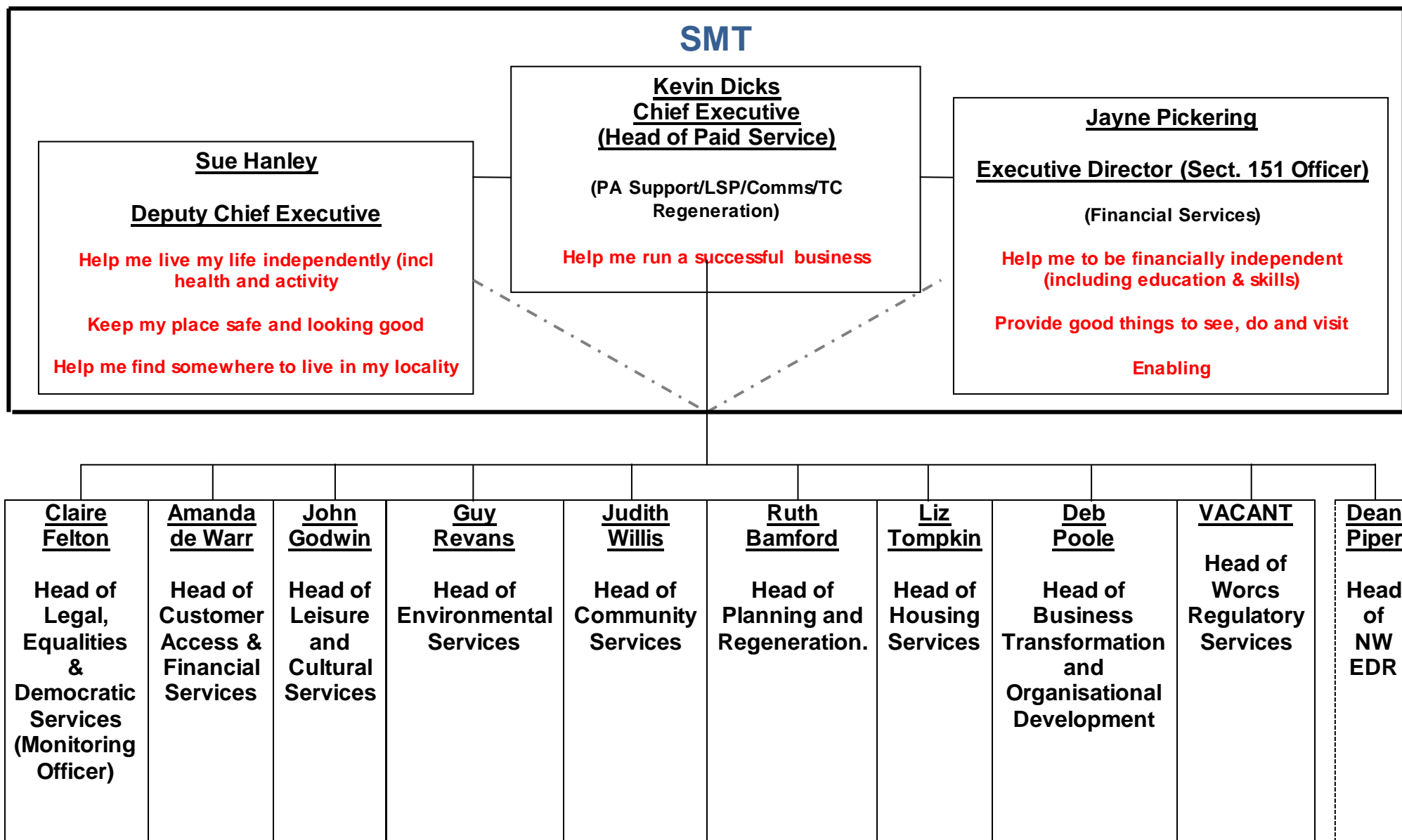


Bromsgrove District Council and Redditch Borough Council - Single Management Structure



Nb – although Executive Directors are not directly responsible for the line management of HofS, they are directly responsible for leading and driving achievement of **Strategic Purposes** and will be expected to co-ordinate activity to enable this.

**Kevin Dicks,
Chief Executive**

- LSP & Other Strategic Partnerships
- Communications, Marketing and Promotion (including oversight of web content)
- Printing & Reprographics
- Civic/Mayoral Support
- Corporate Administration/Central Post Opening
- Town Centre Regeneration

**Deb Poole
Head of Business
Transformation and
Organisational Development**

- I.C.T.
- Business Development
- E Government
- Web Development
- Land and Property Gazetteer / GIS / Street Naming and Numbering
- Transformation, Business Process Re-engineering and Lean Systems
- Information Management
- Freedom of Information, Data Protection, Records Management
- Organisational Development (including Workforce Planning and Succession Planning)
- Training & Development (strategy)
- Performance Management & Improvement
- Policy (excluding service specific strategy)
- Consultation & Community Engagement
- Customer Insight
- Human Resources
- Training & Organisational Development
- Health & Safety

**VACANT
Head of Regulatory
Services**

- Health & safety
- Food Safety
- Food Standards
- Licenses (all)
- Pest & Dog Control
- Animal Health and Welfare
- Contaminated land
- Fair Trading
- Consumer and Business Advice
- Air Quality
- Metrology
- Product Safety
- Rogue Trading and Counterfeiting
- Underage Sales
- Statutory Nuisances
- Infectious Diseases

**Dean Piper
Head of NW EDR**

**Claire Felton
Head of Legal, Equalities &
Democratic Services**

- Professional Legal Advice & Services
- Election & Electoral Services, Periodic Electoral Review
- Democratic Services & Member Support
- Monitoring Officer Role, Probity & Standards
- Governance
- Advice to Parishes
- Member Development
- Equalities & Diversity
- Land Charges

**Sam Morgan
Financial Services Manager
(reports direct to Jayne Pickering)**

- Accounts & Financial Management & Advice
- Procurement
- Audit
- Risk Management
- Payroll (RBC, BDC, WFDC)

**John Godwin
Head of Leisure and
Cultural Services**

- Leisure/Sports Centres/Dual Use Facilities
- Sports and Recreation Development
- Arts Development
- Children & Young People, Play
- Health Education/Interventions
- Parks and Open Spaces
- Allotments
- Museum
- Events
- Community Centres
- Theatre
- Countryside Centre
- Sponsorship

**Amanda de Warr
Head of
Customer Access &
Financial Support**

- Customer Service Centres and One Stop Shops
- Revenues including corporate Income & Debt Management
- Benefits
- Complaints and Customer Feedback
- Customer Service Strategy
- Cashiers
- Reception Services
- Switchboard Services
- Assets & Facilities Management (RBC)
- Property

**Guy Revans
Head of Environmental
Services**

- Waste Management
- Street Scene / Street Cleansing
- Grounds Maintenance/Landscaping
- Bereavement Services
- Climate Change / Energy Efficiency
- Public Conveniences
- Cesspools/Sewers
- Engineering and Design
- Minor Works Team
- Abandoned Vehicles
- Street Naming and Numbering (operational)
- Tree management inc TPOs
- Land Drainage
- Car Parks/Civil Parking Enforcement

**Judith Willis
Head of Community
Services**

- Community Cohesion (Older and Young People) / Social Inclusion
- Community Safety
- Anti Social Behaviour Team
- CCTV & Lifeline Operation & Development
- Voluntary Sector & Community Networks, Grant Aid
- Transport
- Community Transport / Dial A Ride
- Bus Passes / Concessionary Fares
- Grant Aid
- Housing Strategy and Enabling
- Private Sector Housing
- Disabled Facilities Grants
- Travellers
- Shopmobility
- Children's Centres

**Ruth Bamford
Head of Planning and
Regeneration**

- Strategic Planning (Planning & Local Development Framework)
- Development Management (including Planning Enforcement)
- Building Control
- Land Charges
- Emergency Planning / Business Continuity
- Conservation
- Economic Development

**Liz Tompkin
Head of Housing**

- Capital Improvements
- Repairs & Maintenance
- Homelessness
- Housing Options/Choice Based Lettings
- Housing Performance and Database
- Right to Buy
- St David's House Extra Care Housing
- Tenancy Management

